

# Cytoplast® RTM Collagen

Type 1 bovine collagen membrane

## Features & Benefits

Manufactured from highly purified type 1 bovine achilles tendon	Safe for the patient
Longer, predictable resorption time (26 – 38 weeks)	No risk of particle loss due to premature resorption
Unique fiber orientation provides high tensile strength	You can suture or tack the membrane in place without tearing.
Cell occlusive	Prevents epithelial down growth
Optimized flexibility	Stiff enough for easy placement, yet easily drapes over ridge

### 15 mm x 20 mm

Part No. RTM1520  
(2 membranes per box)

Actual size



### 20 mm x 30 mm

Part No. RTM2030  
(2 membranes per box)

Actual size



## Praise for our Product

*“Cytoplast® RTM Collagen membrane is a superior product for many surgical procedures.”*

*Jerald Rosenberg, DMD; Periodontist*

*“So far the best resorbable membrane.”*

*Stanley S. Koh, DDS;  
Oral & Maxillofacial Surgeon*

*“Cytoplast® RTM Collagen has made my guided bone regeneration cases more successful due to its handling properties and predictable resorption time.”*

*Cory Wanatich, DMD; Periodontist*

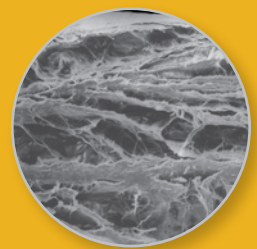
*“Overall this barrier works very well. I've had nice success with ridge augmentations.”*

*Jason Cataldo, DDS, MSD; Periodontist*

### 30 mm x 40 mm

Part No. RTM3040  
(2 membranes per box)

Actual size



Multi-layer construction allows tissue integration into outer layer, while preventing direct passage of bacteria and epithelial cells.

osteogenics.com

1.888.796.1923