

## Novel vacuum plasma technology for Regenerative activation of dental implant

Hydrocarbon and contaminants surrounding the implant are removed from the surface by plasma to increase hydrophilic and acquire better osseointegration.

XPEEDActive cycle of Plasma X Motion has been validated to increase attachment, proliferation, and differentiation of osteoblast cells as well as the adsorption of protein.

Plasma X Motion makes implant surface to have better performance.

\*XPEEDActive (Regenerative Activation by Plasma)



Model	Plasma X <i>motion</i>
Size (W*H*D)	168*340*254
Weight	6 kg
Cycle Time	60 sec

## Plasma X *motion*

Regenerative Activator for Various Types of Implant



Head Office  
Gangnam Office

45, Secheon-ro 7-gil, Dasa-eup, Dalseong-gun, Daegu, Korea  
MegaGen Tower, 607 Seolleung-ro, Gangnam-gu, Seoul, Korea

T. +82-1544-2285  
T. +82-1566-2338



## Plasma X *motion*

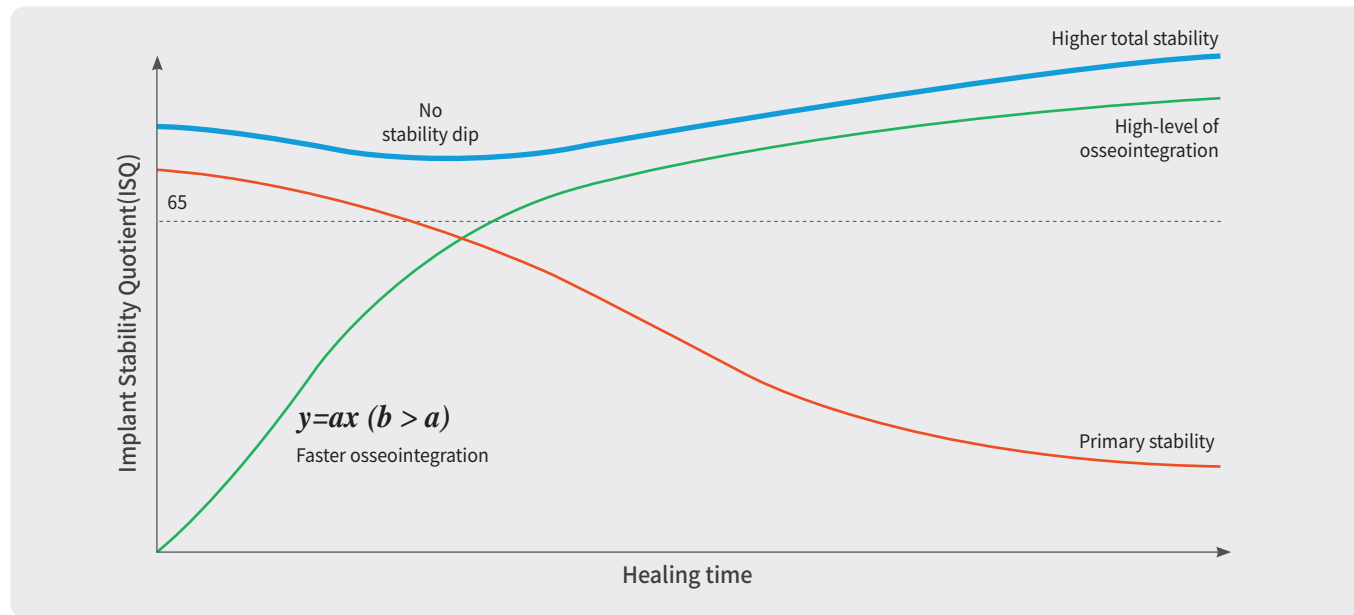
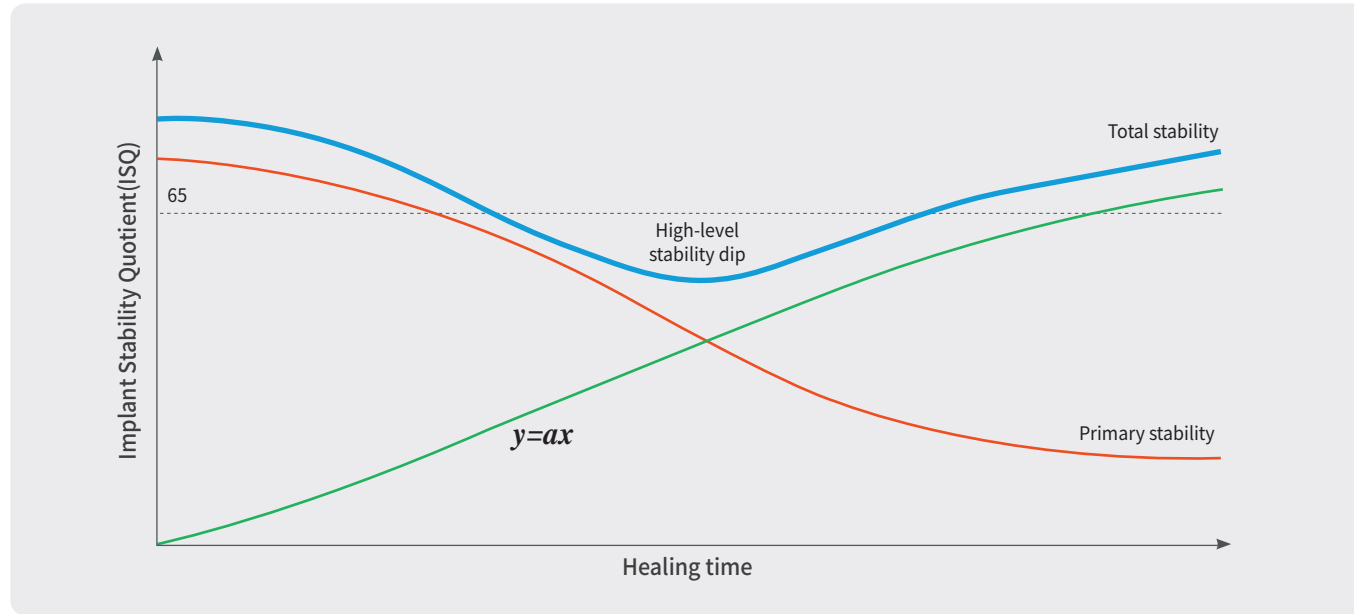
REGENERATIVE ACTIVATOR  
for Various Types of Implant



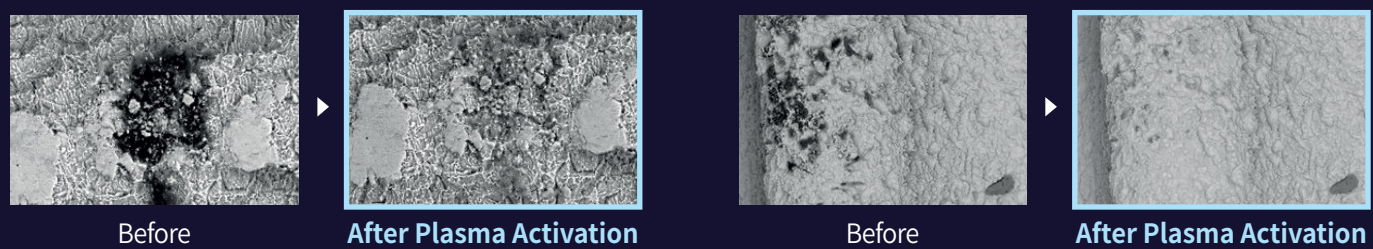
## Technologies developed to shorten healing time & enhance stability

Higher osseointegration performance with higher survival rate

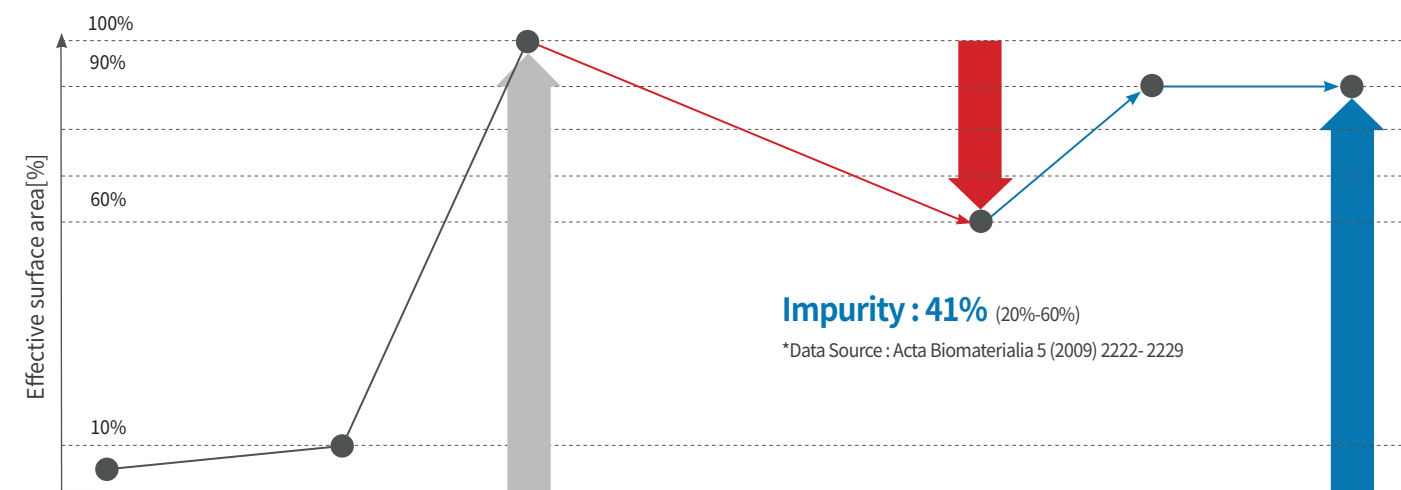
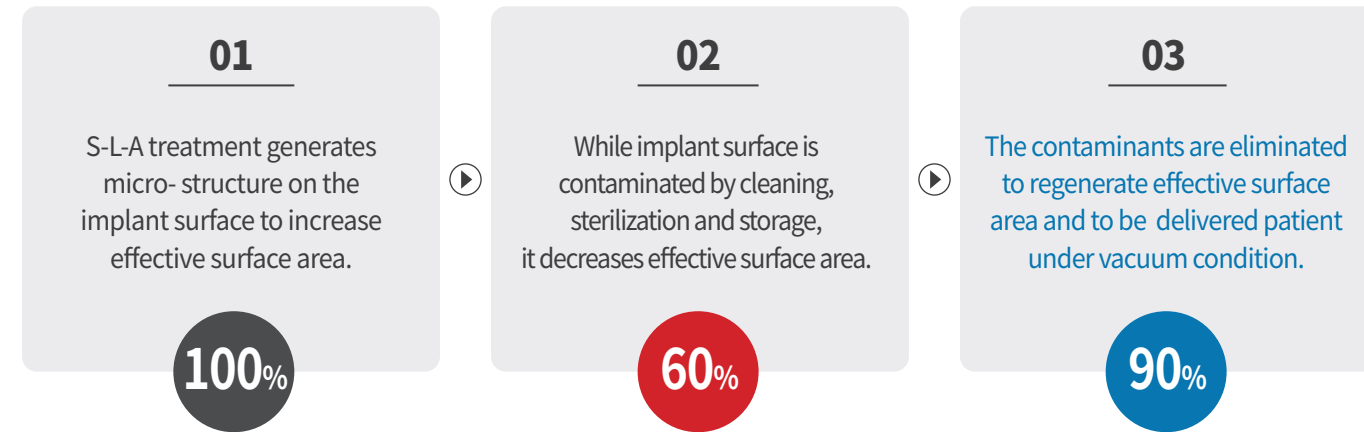
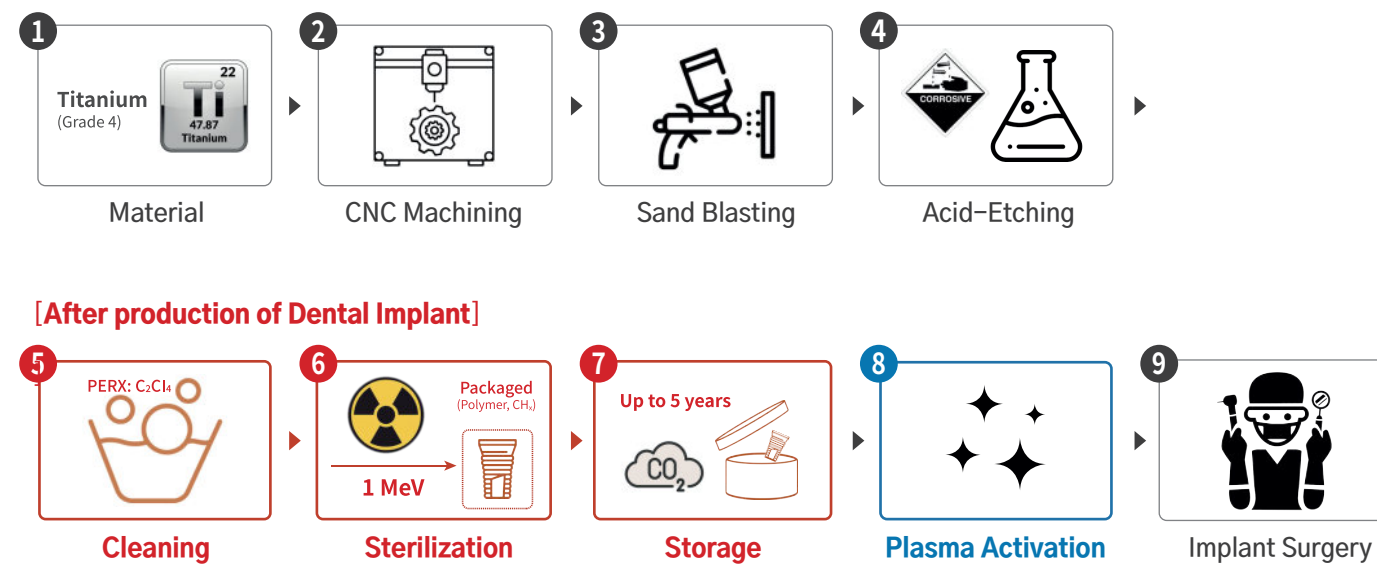
- IMPLANT DENTISTRY / VOLUME 22, NUMBER 5 2013 (ISSN 1056-6163/13/02205-481)



## Plasma Regenerative Activation Implant Comparison (SEM)

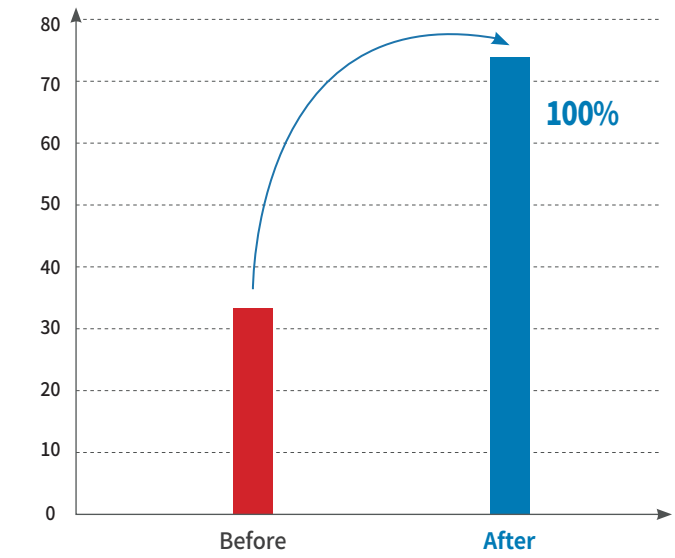
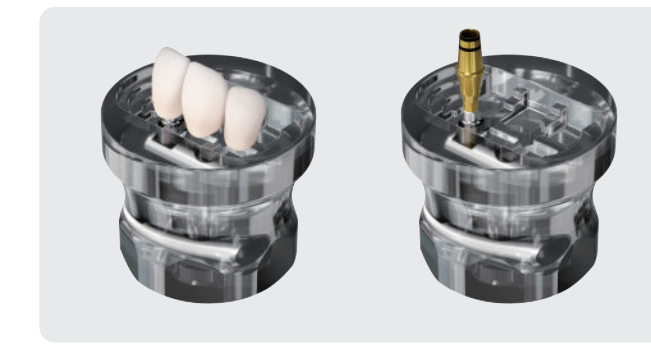


## Process of Contamination and Regenerative activation



## Super Hydrophilic

Increase cement bonding strength 100%



## Compatibility

All types of implants

- Handpiece driver
- Ratchet connector



## Advantage

Visual demonstration

- Increase patient consent rate through visible plasma light
- Place an implant in the best condition toward patients

