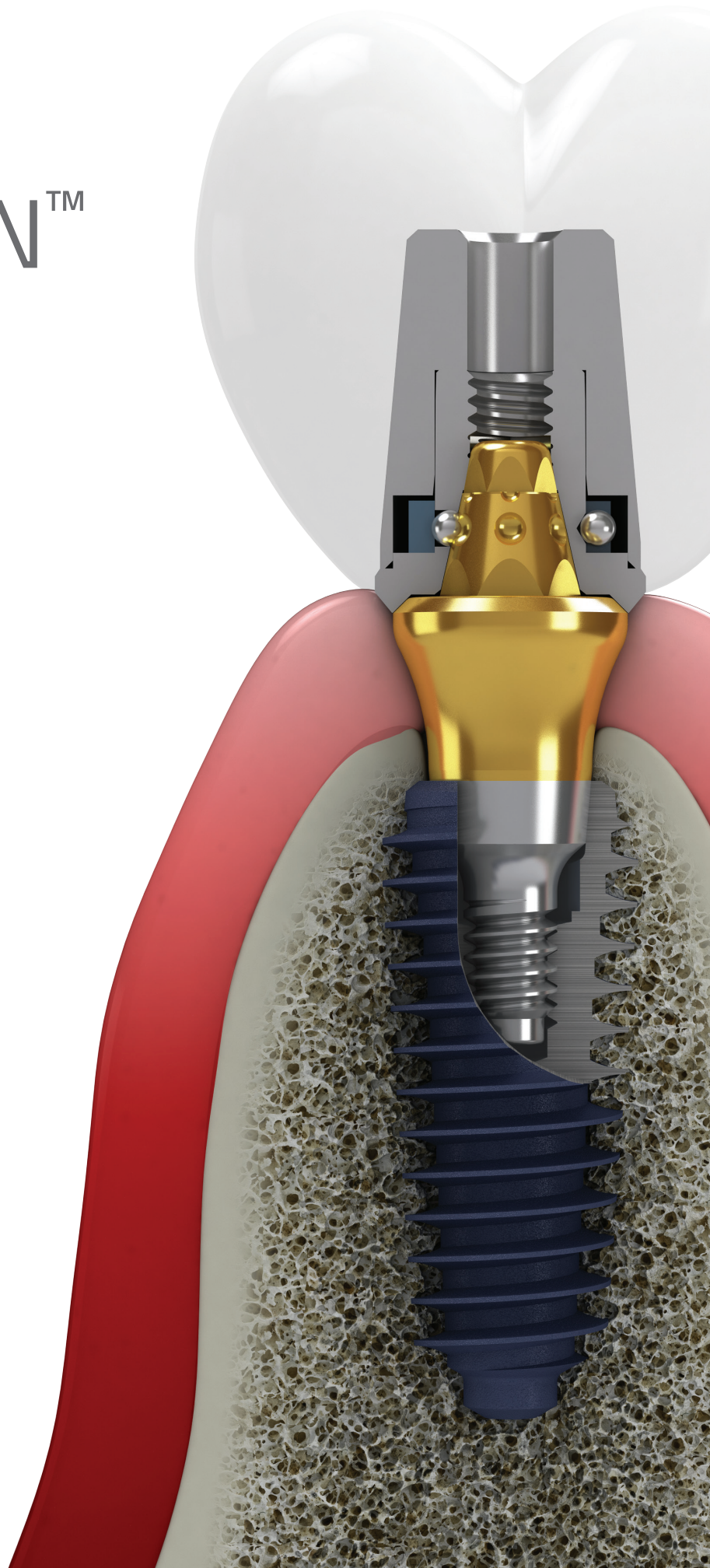


EZ CROWN™

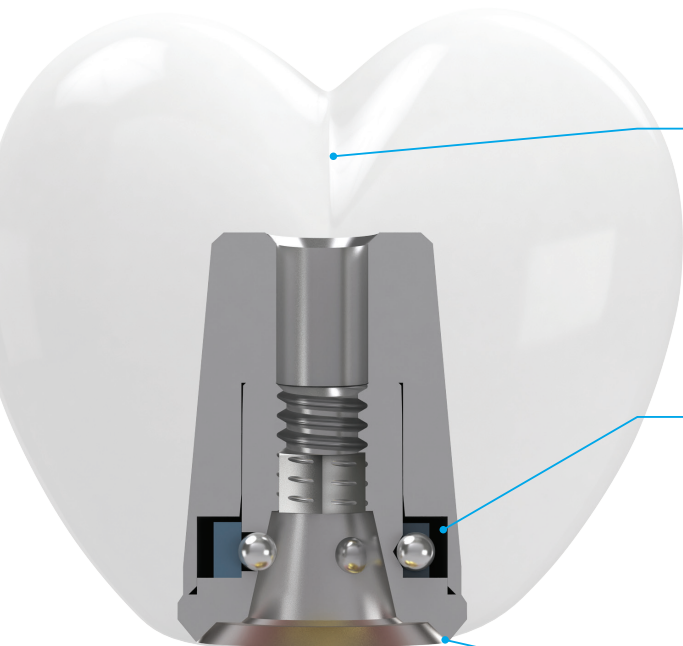
by MEGA'GEN

A new concept for implant prosthetics

- No screw hole
- No cement
- Clicking abutment system



Imagine perfect prosthetics that can



No screw hole

The 'EZ Locking' connection between the spherical grooves of the abutment and Zirconia ball-Nitinol spring of the cylinder creates a screw-less implant and facilitates an optimal occlusion & esthetics.

High retrievability

The 'EZ Locking' connection uses an elastic Nitinol spring & flexible abutment structure that can compensate up to 12.5 degrees, allowing the prosthesis to be retrieved. This high retrievability enables convenient repair of the implant and effective treatment of peri-implant inflammation.

No cement

As the EZ Crown abutment functions as a convertible abutment, this allows all the implant procedures to occur at the gingival level, including impression-taking, prosthesis fabrication, and aftercare.

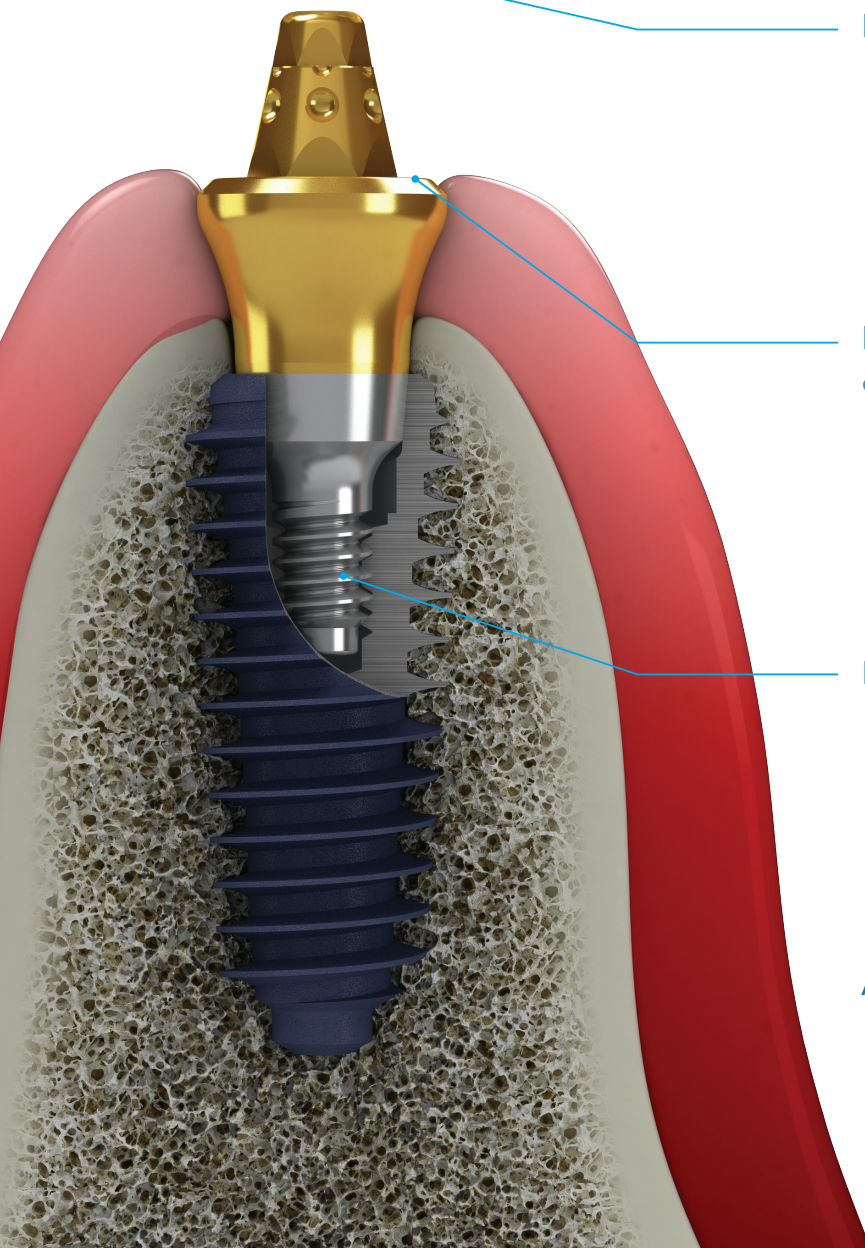
As a result, the entire management/maintenance process is improved.

New way of management & maintenance protocol

EZ Crown makes the entire management/maintenance process more effective for the clinician and pain-free for the patient.

Less sinking, less loosening

The one-piece abutment is tightened into the fixture using a torque of 35N, which essentially eliminates the sinking problem inherent with an internal connection, while also safeguarding against screw loosening.

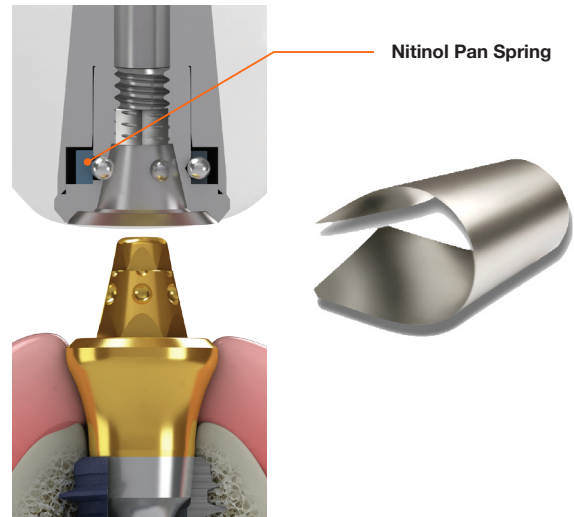


A revolution for implant prosthetics!

last a lifetime!!

Nitinol (shape memory alloy) pan spring provides long-term retentivity

Nitinol (nikel titanium alloy) is a shape memory alloy that is widely used in aerospace & medical technology. As dental implants need to be maintained for over 10 years, the special shape memory characteristic of Nitinol is applied to provide long-term retentivity of the dental prosthesis.



EZ Locking is more convenient for dental prosthetics

As shown in the table, EZ Crown is more flexible & convenient for all aspects of implant prosthetics.

	EZ CROWN	IN-EXT	CEMENT-RETAINED	SCREW-RETAINED	SCRIP
Screw Hole	No	Yes	No	Yes	Yes
Cement removal	Easy	Difficult	Difficult	Easy	Easy
Aesthetics	Excellent	Poor	Excellent	Poor	Poor
Repair	Easy	Easy	Difficult	Easy	Easy
Connection Level	Gingiva	Gingiva	Fixture	Fixture	Fixture
LOAD	Low	Low	High	High	High
Screw Loosening	Low	Low	High	High	High
Retrievability	Very Easy	Easy	Difficult	Easy	Easy

Abutment-level impression only - no impression coping or scan abutment

Another benefit of EZ Crown is easy impression work, just a normal impression - no impression coping or scan abutment – so less effort & shorter chair-time.



Products

Cylinder

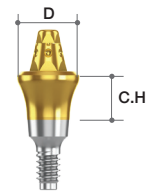
Profile Diameter	Post Height (mm)	Ref.C
Ø5.2	3.8	SEC5238
	5.0	SEC5250
	6.5	SEC5265



Abutment

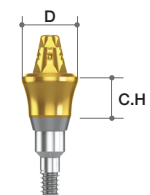
- AnyRidge

Profile Diameter	Cuff Height (mm)	Ref.C
Ø4.5	1.0	SEA451ANS
	2.0	SEA452ANS
	3.0	SEA453ANS
	4.0	SEA454ANS
	5.0	SEA455ANS



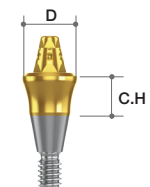
- AnyRidge Octa1
- Straumann(BL/BLT)

Profile Diameter	Cuff Height (mm)	Ref.C
Ø4.5	1.0	IEA451SOS
	2.0	IEA452SOS
	3.0	IEA453SOS
	4.0	IEA454SOS
	5.0	IEA455SOS



- AnyOne
- Osstem(TSIII)
- Dentium(SuperLine)
- Neo(III)

Profile Diameter	Cuff Height (mm)	Ref.C
Ø4.5	1.0	SEA451SRS
	2.0	SEA452SRS
	3.0	SEA453SRS
	4.0	SEA454SRS
	5.0	SEA455SRS



Set

• Cylinder + Abutment



Profile Diameter	Cuff(mm)	Post Height (mm)	Ref.C
AnyRidge	1.0	3.8	SS52138AN
	2.0		SS52238AN
	3.0		SS52338AN
	4.0		SS52438AN
	5.0		SS52538AN
	1.0	5.0	SS52150AN
	2.0		SS52250AN
	3.0		SS52350AN
	4.0		SS52450AN
	5.0		SS52550AN
	1.0	6.5	SS52165AN
	2.0		SS52265AN
	3.0		SS52365AN
	4.0		SS52465AN
	5.0		SS52565AN
AnyRidge Octa1	1.0	3.8	IS52138SO
	2.0		IS52238SO
	3.0		IS52338SO
	4.0		IS52438SO
	5.0		IS52538SO
	1.0	5.0	IS52150SO
	2.0		IS52250SO
	3.0		IS52350SO
	4.0		IS52450SO
	5.0		IS52550SO
	1.0	6.5	IS52165SO
	2.0		IS52265SO
	3.0		IS52365SO
	4.0		IS52465SO
	5.0		IS52565SO
AnyOne	1.0	3.8	SS52138SR
	2.0		SS52238SR
	3.0		SS52338SR
	4.0		SS52438SR
	5.0		SS52538SR
	1.0	5.0	SS52150SR
	2.0		SS52250SR
	3.0		SS52350SR
	4.0		SS52450SR
	5.0		SS52550SR
	1.0	6.5	SS52165SR
	2.0		SS52265SR
	3.0		SS52365SR
	4.0		SS52465SR
	5.0		SS52565SR

Products

Abutment Driver

- Used to connect the Abutment

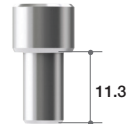
Length(mm)	Ref.C
12	EAD



Attach Driver

- Used to engage and place the cylinder

Length(mm)	Ref.C
11.3	EAAD



Removal Driver

- Used for cylinder retrieval

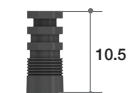
Length(mm)	Ref.C
12	EARD



Impression Coping

- Used for impression-taking on abutment level

Length(mm)	Ref.C
10.5	EIC



Lab Analog

Profile Diameter(mm)	Ref.C
4.5	ECL



Healing Cap

Profile Diameter(mm)	Ref.C
Ø5.0	ECH



Manual



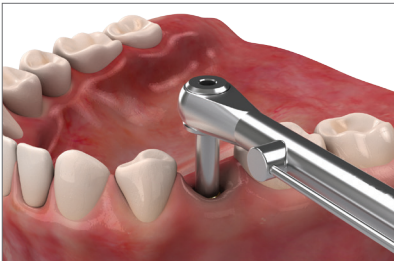
Connect Attach Driver to EZ Crown Abutment-Cylinder set



Connect the EZ Crown Abutment-Cylinder set to the fixture using Attach Driver'. (use hand)



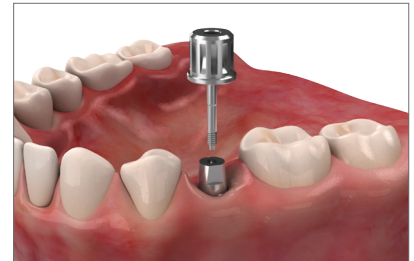
Remove the Cylinder from the EZ Crown Abutment using Remove Driver when tightened to some extent.



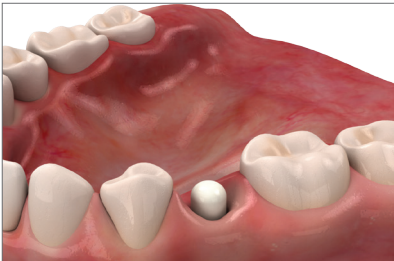
Tighten the EZ Crown Abutment to the fixture finally, using the torque wrench and Abutment Driver (35N)



Re-connect the Cylinder to the EZ Crown Abutment and take an impression on cylinder level



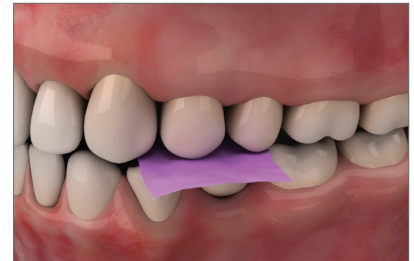
Remove the Cylinder" from the EZ Crown Abutment using Remove Driver



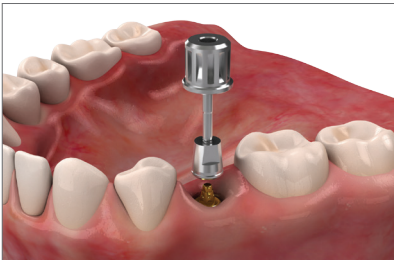
Connect Healing cap to the EZ Crown Abutment. Send Cylinder and the impression model to Dental Lab.



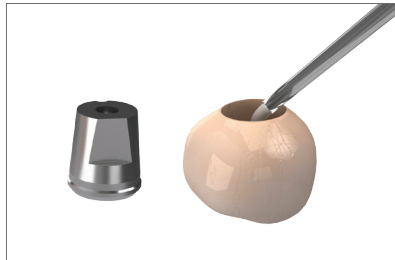
Final Crown and Cylinder



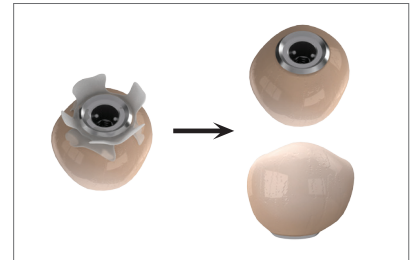
Re-tighten the Cylinder and Final Crown to the EZ Crown Abutment and then check the occlusion.



Remove the Cylinder" from the EZ Crown Abutment using "Remove Driver"



Cylinder and Final Crown cementation



Remove excess cement



Final Prosthesis

EZ CROWN™
by MEGA'GEN



Head Office & Factory
Gangnam Office

45, Secheon-ro 7-gil, Dasa-eup, Dalseong-gun, Daegu, Korea
MegaGen Tower, 607 Seolleung-ro, Gangnam-gu, Seoul, Korea

T. +82-1544-2285
T. +82-1566-2338